

# VIEW FROM THE FOOTHILLS...

*Foothills Land Conservancy's 2013 Spring Newsletter & 2012 Annual Report*





**Foothillsland.org**

373 Ellis Avenue • Maryville, TN 37804

865-681-8326

info@foothillsland.org

*Mission Statement - Foothills Land Conservancy is dedicated to protecting, preserving, and enhancing the lands and environments of East Tennessee and promoting the character of the region for the benefit of the general public, now and in the future.*

#### **Board of Directors**

Dr. Charles Barnett  
Ernie Blankenship  
Terry A. Chervenak, Treasurer  
Jay Clark  
Bill Cobble  
Clarence Coffey  
Dick Conley  
Dr. S. Craig Jarvis  
Mark Jendrek, Secretary  
Mark King  
David Lewis, Vice President  
David Long  
LeAnn Mynatt, President  
Matt Smith  
Mike Suttles

#### **Special Advisors**

Judi Forkner  
Lewis Kearney  
Billy Minser  
Burke Pinnell  
Bob Van Hook

#### **Staff**

Bill Clabough, Executive Director  
Meredith Clebsch, Land Director  
Elise Eustace, Comm. & Dev. Director  
Karen Petrey, Assistant to Land Director

#### **FLC's 2012 Departing Board Members**

Lewis Kearney • Billy Minser  
Bob Van Hook • Donna Young

## ***A letter from FLC's Board President...***

Dear Friends of the Foothills,

2012 was a record-breaking conservation year for Foothills Land Conservancy, with 6600 acres preserved! In the last two years alone, FLC preserved a total of 11,000 acres through 31 conservation easement agreements, which lie in 18 Tennessee counties. This type of success requires a group effort of dedicated land donors, our Friends of the Foothills, a diligent Board and staff, and the many others who work in this field and behind the scenes to make conservation projects happen.

In addition to our land conservation successes, FLC has also implemented sweeping policy and organizational changes in furtherance of the Land Trust Alliance's organizational assessment guidelines. FLC is currently pursuing accreditation from LTA in 2013. We are also working to create a permanent foundation for planned gifts. The foundation will provide oversight while supporting land acquisition and stewardship programs, a landowner financial assistance fund, and other conservation projects.

Inside this newsletter you will find an overview of FLC's 2012 land projects and our priority conservation areas for this year. As we move into our 28th year of service as an East Tennessee land trust, I can see many more successes on the horizon. With Congress' extension of favorable tax treatments for donated conservation easements, we are sure to see continued demand from property owners. I am excited to continue my work with an amazing team.

Thank you for being a valued Friend of the Foothills! We look forward to seeing you at our Annual Celebration on August 17th and our many other events throughout the year.



LeAnn Mynatt  
Board President

## ***Letter from the Director...***

Foothills is now in its 28th year of service as a land trust. To date we celebrate the preservation of over 36,000 acres in 23 Tennessee counties! As President LeAnn Myantt mentioned in her letter, last year's record-breaking year and our ongoing success are due to a team effort, and we just cannot thank all of our supporters enough for their generosity and enthusiasm.

In 2012, many of FLC's projects focused on the Cumberland Plateau portion of Middle Tennessee. This region is known for its biodiversity, history, recreational opportunities, and viewsheds. The conservation easements FLC has recently completed will help to preserve this beautiful area and establish buffer zones for large, protected areas nearby. These areas include the South Cumberland State Recreational Area and Fall Creek Falls State Park. You can read about these projects in this issue, starting on the next page.

As we move into 2013 and beyond, our focus continues to be on the preservation of the East Tennessee region. Priorities include the conservation of lands that enhance water quality and contain viewsheds, as well as biologically diverse properties and agricultural lands.

With 105 conservation easement partnerships to date, land stewardship and annual monitoring of these properties is a big priority. Most of these site visits are completed during the first part of the each year when the dormant season lends itself to travel in the woods. Currently, we are identifying surveyed boundaries with handheld GPS units and GPS cameras so that all boundary data can be stored electronically, aiding in future property visits. All visits result in a report to the landowner that includes observations and recommendations, if any. We will also continue our outreach efforts to the community at large as well as to individuals and their families. FLC is always willing to provide information and presentations to local civic groups, organizations, clubs, and businesses. Give us a call!

We look forward to keeping you apprised of our efforts throughout the year and, as always, we appreciate the generous and ongoing support of our Friends. Thank you.



Bill Clabough  
Executive Director

### ***In this issue...***

**2012 Land Protection Partnerships**  
(page 4)

**Overview of FLC Projects**  
(page 8)

**A Tribute to Randy Brown**  
(page 9)

**Friends of the Foothills**  
(page 10)

**Legacy Circle**  
(page 13)

**2013 Calendar of Events**  
(page 14)

**Summer Celebration**  
(page 15)

**Connect to Foothills**  
(back page)

*Photo courtesy of Mike Naney*

### **Front Cover Images from FLC Conservation Easements Properties Courtesy Of:**

**Meredith Clebsch:** Waterfall - Coffee County (top of page - right image)

**Karen Jones:** Creek - Sevier County (top of page - middle image); View atop Bluff Mtn. - Sevier County (middle of page - right image); Horses in Field - Sevier County (bottom of page)

**Mike Naney:** Tulip Poplar - Blount County (top of page - left image); Entrance Road to Camp Montvale - Blount County (middle of page - left image)

## 2012 Land Protection Projects

*This past year Foothills partnered with landowners on 12 conservation easement agreement projects covering 6600 acres of farms, woodlands, and water tributaries in 7 counties! Take a look...*

### FLC's 100th Easement - Blount County

#### Jarvis Property - 62 acres

Dr. Craig Jarvis helped FLC commemorate the organization's 100th conservation easement agreement in December of 2012 by signing his second easement with Foothills! This second partnership protects a 62-acre tract in Blount County that is 50% wooded, with most of the remainder in hay fields. The property is very close to Chilhowee Mountain and the 11,000-acre Foothills Wildlife Management Area (WMA), a vital buffer between the Great Smoky Mountains National Park and the developed areas outside the Park's perimeter. Other natural areas in the vicinity include the 350-acre Kyker Bottoms WMA and the 8000-acre Tellico WMA<sup>3</sup>. The Jarvis property, due to its proximity to these areas, represents another buffer habitat for maintaining healthy populations of resident and migratory wildlife species and as a reservoir for native plant species. For the Jarvis', the timing was right for the second easement, *"we didn't want it to change, and we felt like because of that, it was time to go ahead and place the easement on it also - so that we know from this moment on it won't change."* Back in 2007, Jarvis permanently preserved nearly 478 acres in Monroe County. Located in the wooded foothills of the Unicoi Mountains, the majority of the acreage from the first easement is forested with 2nd and 3rd growth oak, hickory, and pine. The west side of that tract offer views of Starr Mountain and the



Cherokee National Forest. FLC also celebrated Dr. Jarvis' return to FLC's Board of Directors in 2013. Craig has been associated with FLC since it started and has served intermittently on the Board throughout the years.

**Top image:** (left to right) Dr. Craig Jarvis, FLC Conservation Easement Donor & Board Member; LeAnn Mynatt, FLC Board President; Bill Clabough, FLC Executive Director; and Ernie Blankenship, FLC Board Member **Left image:** View of the foothills from Jarvis' 2nd Conservation Easement with FLC

### Loudon County

#### Cline Property - 56 acres

Also celebrating their second conservation easement with Foothills are practicing physicians, Drs. Richard & Kim Cline. Back in 2008, the Clines put close to 220 acres in an easement with FLC. The Clines wanted to continue to protect their land from development by placing a second easement on an adjoining 56 acres. The Clines' property is located in an area that is increasingly subject to development due to its proximity to Highway 321. The property also lies close to three TVA reservoirs: Fort Loudon Lake, Watts Bar Reservoir, and the Tellico Reservoir on the Little Tennessee River. About 2/3 of the second tract is currently in hay fields with at least two wildlife plots under current cultivation. The forested sections contain both evergreen and deciduous trees.



## 3 adjacent FLC conservation easements totaling 3469 acres in Coffee & Grundy Counties!

Wild Boar - 1112 acres • Pull Tight - 1130 acres • Land South - 1227 acres

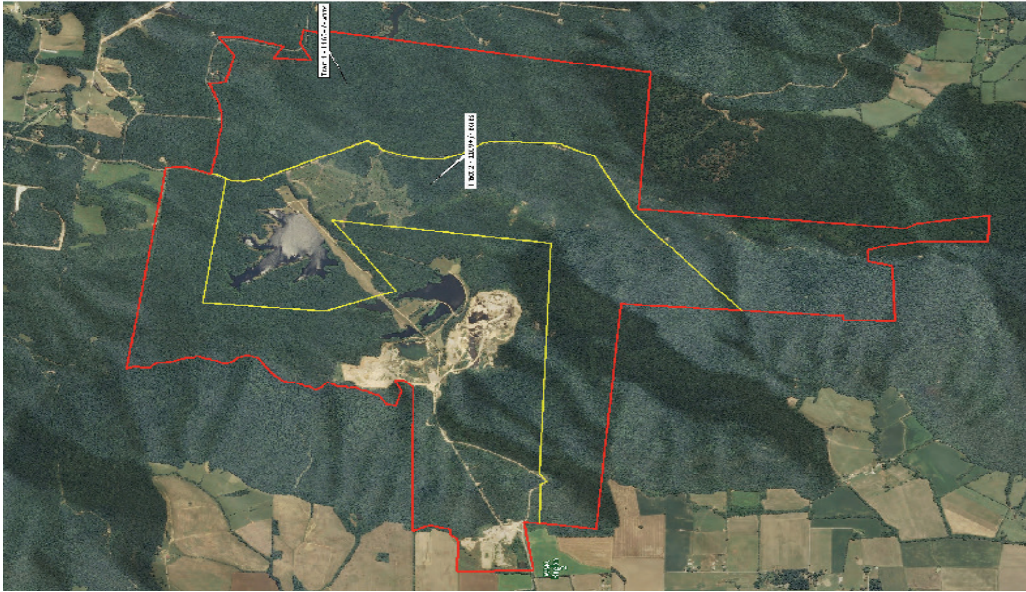


Image on left: Aerial view of 3400 acres of permanently protected lands running along the western edge of the Cumberland Plateau. The red line indicates the perimeter of the three easements, and the yellow lines distinguish each project.

\* \* \*

Quote by Keith Thompson, Land Manager of all three conservation easements, “I was overwhelmed by the process of preserving these properties, but Bill and Foothills were really easy to work with. It’s hard not to get emotional when you think about it, but I’m just excited about the opportunity to keep the place just like it is forever and ever.”

For Keith Thompson, the Manager of all three preserved tracts, having a large, permanently conserved acreage in the Cumberland wilderness surrounding a 100 acre camp and Christian ministry is a dream come true. “Once we started to explore the property we found quail and duck habitat. We look forward to starting a timber/forestry management program. The former sand mines now house springs that stay full all the time and are full of fish. It’s perfect for fly fishing and even teaching someone how to fly fish! We hope to break ground on the ministry sometime in 2014.”

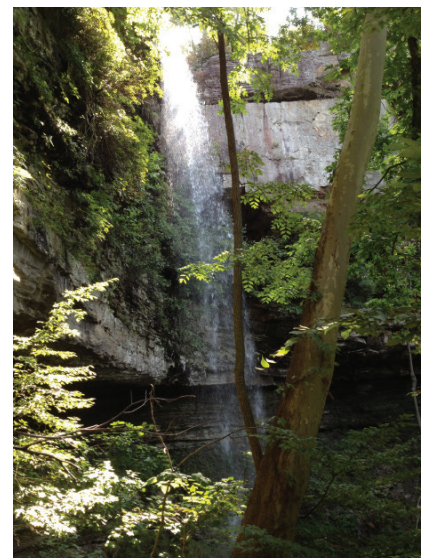
Roughly two thirds of the 3400 acres consist of mixed hardwoods, with one third consisting of lakes, open fields, and a former sand mine. Throughout the three tracts, ephemeral wetlands have been noted. Much of the perimeter of the property includes the cliffs and ledges of the Cumberland escarpment - offering a diversity of wildlife, plants, and habitat types. Several rare plants have been noted on or near the property, including American smoke tree and fameflower.

According to Meredith Clebsch, FLC’s Land Director, “the Cumberland Wilderness properties may be the most ecologically diverse easements FLC holds to date. The Cumberland Escarpment, the Cumberland Plateau, and the valley below together offer a great variety of habitat types and opportunities for diversity of flora and fauna. The steep slopes of the escarpment tend to be less disturbed and so retain many elements of the unique communities that have naturally evolved there. Geologic diversity is an important factor in the complexity of the flora on the properties and also creates an incredibly scenic environment. The sandstone cliffs and rockhouses are simply dramatic and exciting to explore. We are looking forward to learning a great deal from these properties.”



(Left) Keith Thompson, Conservation Easement Donor, and Bill Clabough, FLC Executive Director, (with Keith’s dog Addy) visit on the Pull Tight property in Coffee County during the official easement agreement signing in December 2012.

(Below) Largest falls on the Pull Tight tract - part of Mill Creek.



## Warren County

### Dry Creek - 433 Acres

Located south of McMinnville, the property is within 20 miles of Fall Creek Falls State Park. The vast majority of the site is forested. Gently rolling plateau tops allow for scenic views. The easement will help to protect these high areas, which comprise part of the view shed for the valleys below. Within 15 miles of the property, there are several Class II Natural-Scientific State Natural Areas. Hubbard's Cave, considered by the Nature Conservancy as a "foremost cave preserve," is found within 4 miles of the Property. This State Natural Area is comprised of the cave and 50 surrounding acres and is home to large populations of endangered gray bats and Indiana bats. Within 10 miles of the property is the Savage Gulf Class II Natural-Scientific State Natural Area, part of South Cumberland State Park. A National Natural Landmark, Big Bone Cave, is located 15 miles away.



## Warren County

### Myers Cove - 460 acres

The property, located southeast of McMinnville, is located in the southwest portion of the Cumberland Plateau. Within a short driving distance from the Myers Cove property, are numerous parks including the northernmost portion of South Cumberland State Park, the 16,000 acres of Fall Creek Falls State Park, and Rock Island State Park (which encompasses nearly 900 acres). The property is also in close proximity to Cumberland Caverns, the fourth largest cave in the U.S. The property is roughly 70% wooded with the remainder composed of fields in varying degrees of succession. Some of these fields consist primarily of native grasses; others are composed of a variety of grasses and forbs. Tree and shrub species in successional areas include tulip poplar, sourwood, Virginia pine and dwarf sumac. Escarpment slopes include mature and diverse forests of American beech, sugar maple and several oak species. The tract is drained by creeks that are part of the Collins River watershed. This watershed supports 28 known rare, threatened, or endangered species of plants and animals. Twenty of these species have been identified within a four-mile radius of the property. At least two year-round streams found on the property provide plentiful water to resident and migratory species. Currently, these streams are minimally impacted by activities on and off the property and provide a high quality resource to the Collins River watershed area.



## Van Buren & Bledsoe Counties (Meadow Creek - 466 Acres)

### Van Buren County (Piney Cumberland - 439 Acres)

The Meadow Creek and Piney Cumberland easements are adjacent tracts. They are located in close proximity to Fall Creek Falls State Park, providing a regional corridor for wildlife movement. These easements protect Piney Creek and its associated tributaries. Piney Creek is a major tributary for Cane Creek, which flows into Fall Creek Falls. Numerous species of trees, shrubs, vines, and herbaceous plants are found on both properties. Both properties are forested, dominated by oaks. White oak appear to be the most dominant tree, followed by red, black and southern red oaks. As oak trees mature, they produce mast acorns that provide winter food important for the survival of many species. A population of worthy shield lichen, listed



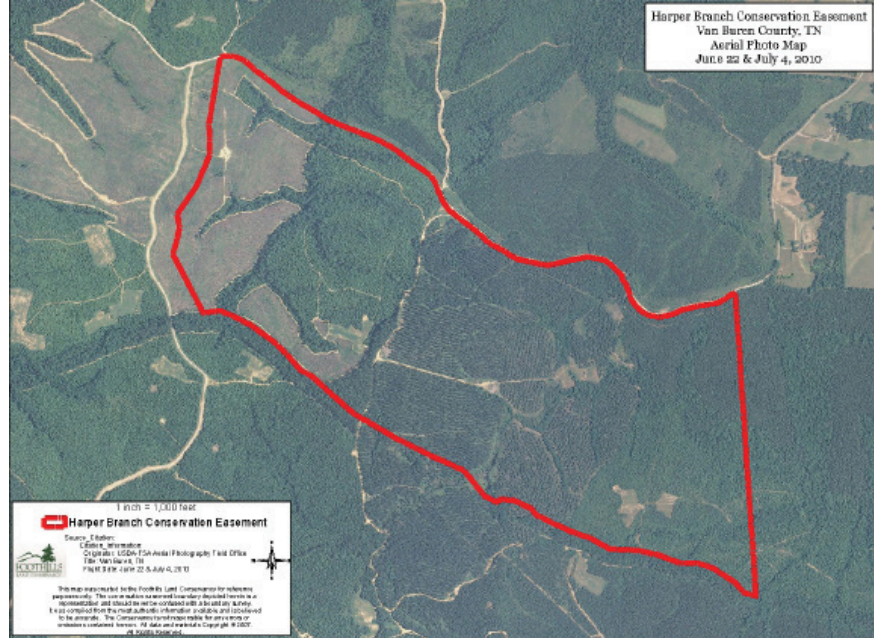
# Van Buren County

## GoForth - 395 Acres

The GoForth conservation easement, situated on the Cumberland Plateau, is south of Spencer and less than a mile from Fall Creek Falls. The property contains a creek, open fields, and several groves of mature trees. The proximity of this property to Fall Creek Falls aids in the establishment of a regional wildlife corridor. This type of continuity is an important ecological concept for sustainable habitat for plant and animal species.

## Harper Branch - 500 Acres

Located south of Spencer, Tennessee, Harper Branch is situated on the southwestern portion of the Cumberland Plateau. Within a short driving distance from this property lies the northernmost portion of South Cumberland State Park, Fall Creek Falls State Park, and Rock Island State Park. Roughly 2/3 of the Harper Branch property is in early-successional grasses, forbs, and shrubs, with the remainder in mature loblolly pine plantation. Broomsedge grass and plants such as rabbit tobacco, green sawbrier, and Canada goldenrod are prominent. A property adjacent to the 1.5 miles of Harpers southern boundary offers biological diversity and the culturally historic Trail of Tears (Northern Route). This area includes a narrow band, about 200 feet wide, of older growth timber in largely mixed hardwoods and some pines. The herbaceous and sub-canopy layers on the Trail of Tears are fairly diverse in native species and together provide quality food sources, nesting, and cover for many native wildlife and invertebrate species. Headwaters for three streams that drain to the nearby Rocky River originate on the property.

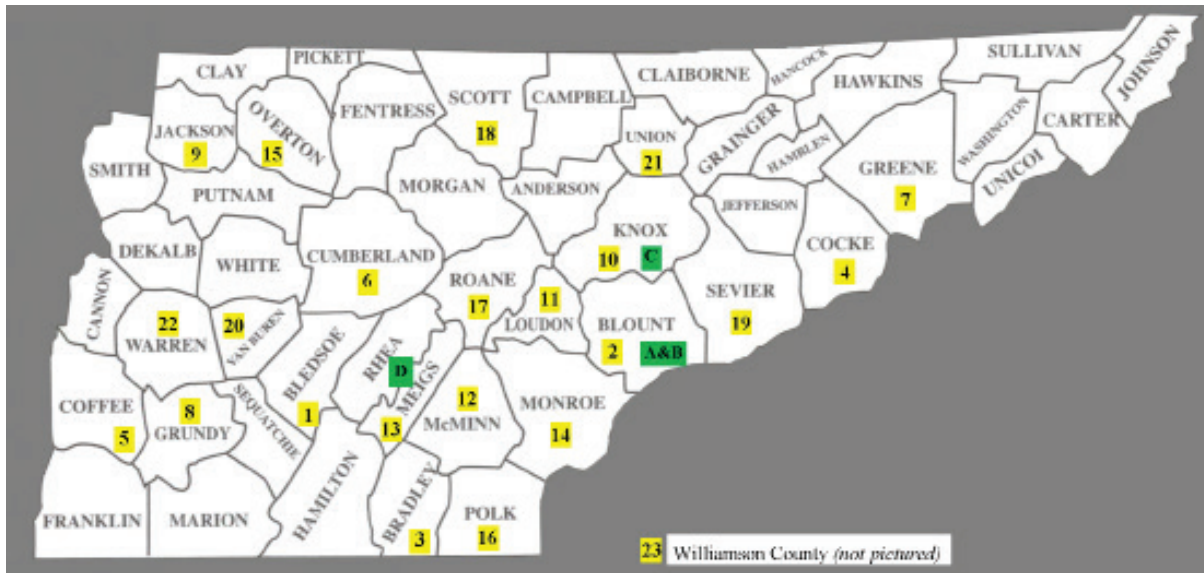


## Cane Creek - 345 acres

The Cane Creek property is nearly 100% in woodland with about 75% in planted pine plantations and the remainder in mixed oak forest (within drainages and riparian areas). The large areas of public lands in the region include the 20,000 acres of the Fall Creek Falls State Park and Natural Area, which is less than one mile from the Property, and the Bridgestone/Firestone Centennial Wilderness, which totals 15,000 acres. As an almost completely forested landscape, the Cane Creek property is a critical component in the support of the ecological viability of the wildlife corridors between these vast protected lands of the Cumberland Plateau. The property is located within the Caney Fork River watershed and contains the source of the Whetstone Fork of Cane Creek, which then flows into nearby Fall Creek Falls State Park and supports Cane Creek Falls. Currently, a 60,000-acre wilderness corridor is envisioned by conservationists who hope to link Scott's Gulf to Bledsoe State Forest and Fall Creek Falls State Park. The Cane Creek property would serve as a buffer. Therefore, conserving the property in its natural state and would further the goal of establishing a vast, unbroken corridor.



# OVERVIEW - Foothills Land Conservancy's Land Projects



## FLC Conservation Easement Acreage by County

105 Projects • 23 Counties • 23, 891 acres

- 1) Bledsoe (see Van Buren)
- 2) Blount - 34 easements totaling 5922 acres
- 3) Bradley - 1 easement totaling 312 acres
- 4) Cocke - 2 easements totaling 640 acres
- 5) Coffee - 3 easements within Coffee & Grundy totaling 3469 acres
- 6) Cumberland - 2 easements totaling 1435 acres
- 7) Greene - 2 easements totaling 86 acres
- 8) Grundy (see Coffee)
- 9) Jackson - 1 easement totaling 360 acres
- 10) Knox - 17 easements totaling 1236 acres
- 11) Loudon 2 easements totaling 271 acres
- 12) McMinn - 2 easements totaling 196 acres
- 13) Meigs - 1 easement totaling 186 (see also Roane)
- 14) Monroe - 8 easements totaling 2079
- 15) Overton - 1 easement totaling 400 acres
- 16) Polk - 1 easement totaling 648 acres
- 17) Roane - 7 easements totaling 1490 acres  
(1 easement is a co-hold with TN Parks & Greenways;  
1 easement covers both Roane & Meigs)
- 18) Scott - 1 easement totaling 555 acres
- 19) Sevier - 11 easements totaling 1357 acres
- 20) Van Buren - 5 easements totaling 2118 acres  
(one easement is also located in Bledsoe)
- 21) Union - 1 easement totaling 112 acres
- 22) Warren - 2 easements totaling 893 acres
- 23) Williamson - 1 easement totaling 126 acres

## FLC Land Projects - The Early Years

**A. Abrams Creek - Foothills Wildlife Management Area (Blount County):** In the summer of 1995, Foothills along with many individual supporters and organizational partners raised close to 1.4 million dollars to secure a 4,600 acre tract called the Abrams Creek - Chilhowee Bear Reserve. This land is not only home to black bears but also 300 other vertebrate species and 950 plant species. 4,200 of these acres were donated to TWRA (known as the Foothills Wildlife Management Area - FWMA) and the remainder 392 acres were donated to the National Park Service for inclusion in the GSMNP. Within the next two years, 300 additional acres were transferred to TWRA. Upon completion of a \$500,000 fundraising campaign by FLC in 1997, 1,500 acres were preserved on the south end of Chilhowee Mountain. FWMA has now grown to more than 10,000 acres as a result of various additions by TWRA.

**B. Kyker Bottoms Wildlife Refuge (Blount County):** In the fall of 1998, a 524 acre wetland refuge along Ninemile Creek in Blount County was purchased through efforts by FLC, TWRA, and Ducks Unlimited. The 1.9 million dollars used to purchase the property was provided through the state of Tennessee's Wetlands Acquisition Fund. This fund was financed through a percentage of the state's land transfer fee. Ducks Unlimited provided a \$60,000 donation and the Lyndhurst Foundation donated thousands of hardwood trees necessary to restore key bottomland habitat. This wetland refuge is open to the public and managed by the Tennessee Wildlife Resource Agency.

**C. Forks of the River WMA (Knox County):** This 500 acre site, previously a farm before TVA ownership, had served as a wildlife management area through a revocable lease by Tennessee state surplus properties. The area is at the confluence of the French Broad and Holston Rivers just 2 miles upstream from downtown Knoxville. Through negotiations of FLC leadership, TWRA officials and a key state legislator, this property was transferred permanently to TWRA. It's now linked with a greenway trail to Ijams.

**D. Yuchi WMA at Smith Bend on Chickamauga Lake (Rhea & Meigs Counties):** This 2,500 acre refuge was acquired through the cooperative efforts of FLC, The Conservation Fund, TWRA, and many other organizations. Yuchi is now owned and managed by TWRA. The area includes wetlands, uplands and important riparian habitat along Chickamauga Reservoir, and is one of a string of management areas and refuges on the lake and Hiwassee Refuge. Once threatened by industrial development, Yuchi now is part of a complex of natural areas on Chickamauga that provides feeding habitat for migrating waterfowl and sandhill cranes.



I've never known anyone who could be more charming or persuasive in recruiting folks' time or their money for his cause. He was truly charismatic and a visionary on many fronts. Fortunately for us East Tennesseans, he chose to focus on land preservation around the Smokies. - Jack Rose, Long Time Friend of Randy Brown & an FLC Supporter

## ***A Tribute to Randy Brown...***

*Randy Brown, Foothills' former Executive Director, passed away July 4th, 2012, in Chattanooga, TN. Randy propelled Foothills forward in so many ways and FLC would not be where it is today without his passion and efforts. Billy Minser & Gail Harris wrote a letter to the editor at "The Daily Times" shortly after his passing and we wanted to share it with you.*



Thanks Randy Brown,

The recent passing of Randy Brown requires us to remember his contributions to quality of life in Blount County and East Tennessee. In 1993, Randy was hired as the first Executive Director of Foothills Land Conservancy (FLC), whose mission was to protect the scenic and rural beauty of the foothills of the Smokies. At that time, the FLC had a limited scope and little revenue. Randy developed financing, cultured community relationships, and through his Board of Directors expanded the mission of the organization. He was a bold visionary who believed passionately in conservation. The acquisition of a 4600-acre tract on Chilhowee Mountain from Tapoca Inc. was one of Randy's most significant early accomplishments. The tract protruded into Great Smoky Mountains National Park (GSMNP) on Abrams Creek and was threatened by development. Few know that Randy co-signed a personal bank note for \$70,000 for a non-refundable option to buy the \$1.3 million tract. Through his tireless leadership, FLC raised the money for the purchase; 300 acres along Abrams Creek were donated to GSMNP and the rest is now the 10,000 acre Foothills Wildlife Management Area. Other land acquisitions followed, including Kyker Bottoms Refuge in Blount County and the 2500-acre Yuchi Wildlife Management Area in Rhea County.

Under Randy's leadership FLC's emphasis shifted from land acquisitions to conservation easements with private landowners, giving them a way to protect their land from development and help maintain East Tennessee's rural and scenic character. FLC continued what Randy started and now protects more than 30,000 acres. As a result of Randy's pioneering work with the FLC, all of us can enjoy more green landscapes and public and private outdoor recreation areas in Blount County and East Tennessee. Thank you, Randy. We will never forget.

Billy Minser & Gail Harris

*\*Billy Minser is a past FLC President/Board Member &  
Gail Harris is a Founding Member & FLC's First Board President*

## **FLC to Apply for Accreditation in 2013**

Foothills is pleased to announce that it is applying for accreditation in September 2013. After completing an extensive review and update of all policies, records, and practices, Foothills is ready for the extensive review and rigorous standards of the Land Trust Accreditation Commission.

*"We're excited to be going through the accreditation process. When the process is over with, we will be a stronger land trust, and we'll have the proper policies and procedures in place to best serve landowners and the general public more efficiently,"* said Executive Director Bill Clabough.

The Land Trust Accreditation Commission, an independent program of the Land Trust Alliance, conducts an extensive review of each applicant's policies and programs. The land trust accreditation program recognizes land conservation organizations that meet national quality standards for protecting important natural places and working lands forever.

According to the Land Trust Accreditation Commission's website, "The accreditation seal is a mark of distinction in land conservation. It recognizes organizations for meeting national standards for excellence, upholding the public trust, and ensuring that conservation efforts are permanent."

A public comment period is now open. The Commission invites public input and accepts signed, written comments on pending applications. Comments must relate to how Foothills complies with national quality standards. These standards address the ethical and technical operation of a land trust. For the full list of standards, see <http://www.landtrustaccreditation.org/tips-and-tools/indicator-practices>.

To learn more about the accreditation program and to submit a comment, visit [www.landtrustaccreditation.org](http://www.landtrustaccreditation.org), or email your comment to [info@landtrustaccreditation.org](mailto:info@landtrustaccreditation.org). Comments may also be faxed or mailed to the Land Trust Accreditation Commission, Attn: Public Comments: (fax) 518-587-3183; (mail) 36 Phila Street, Suite 201, Saratoga Springs, NY 12866

***Comments on Foothills' application will be most useful if submitted before October 28, 2013. 9***

# ***A very special thank you to our Friends of the Foothills for all of your contributions, time, and talents in 2012!***

Charles & Donna Alexander  
Lamar & Honey Alexander  
Paul & Kathleen Ambrose  
Jane & Walter Anen  
Fran Ansley & James Sessions  
William & Lucretia Atterson  
William & Margaret Baldauf  
Tom & Diane Ballard  
Jean W. Bangham  
Dr. Charles & Sheila Barnett  
John & Marjorie Beasley  
Robert L. Belcher  
Janis D. Berg  
Herman & Betty Best  
Tim & Janet Bigelow  
Arville & Genois Billings  
Tommy M. Bird  
David & Judith Birdwell  
Joy M. Bishop  
Ernie & Pat Blankenship  
Christine R. Boake  
Nan Bobbett  
Mike J. Bohannon  
Ray & Sharon Boswell  
Bernie & Carol Bowman  
Gerald & B.J. Boyd  
E. Craig Bradley  
Mary L. M. Breining  
George & Anne Bright  
Ben & Sherry Broome  
Sherry Browder  
Michael S. Brown & Betty Evans  
Robert & Barbara Brown  
Robert & Joyce Brown  
Rebecca Bryant  
Siobhan M. Bryne  
Marion E. Bulman  
Charles & Marion Burger  
Dr. Patrick & Fae Burkhart  
Dr. Tara M. Burnette  
John & Lois Burns  
Donald Caldwell  
Matt Caldwell  
Jim & Priscilla Campbell  
Roy Glenn & Faye Cardwell  
Bart & Ruth Carey  
Bonnie C. Carroll  
Richard & Barbara Carter

Stephen H. Cartwright  
Norman & Beverly Mae Ceaglske  
Sally J. Chaffin  
Jeff & Vicki Chapman  
Terry A. Chervenak  
Mr. & Mrs. Allen Chesney  
Betsy Child & Paul Barber  
Ben C. Clark, Jr.  
Jay & Stacy Clark  
Pete & Linda Claussen  
Melanie Clifford  
Bill & Donna Cobble  
Cheryl E. Coleman  
Dr. Robert H. & Mrs. Collier  
Martha E. Cook  
David & Janice Cooper  
Charles & Susan Corn  
John & Peggy Cowan  
Terry & Juanita Cowles  
Rachel Craig & James Hagerman  
David & Lola Curran  
Sam & Jody Curtis  
Dr. Mary F. Cushman  
Keith G. Dayhuff  
Mary Lynn Dobson  
James & Michele Donnelly  
Mary L. Dresser  
David & Marilyn Dwyer  
Nicholas Dwyer  
Beth Eason & Brad Rayson  
Darrell & Glenda Eastridge  
David & Donna Edwards  
Leigha M. Edwards  
Allan & Donna Jean Ellstrom  
Joseph S. Emert  
Veronica Erti & Richard Delaunders  
Elizabeth Estill  
Carter & Magda Eustace  
Dr. J. H. & Janet Exton  
Dr. Walter & Lynne Fain  
LaVerne Farmer  
Nicholas & Marlene Fessick  
David & Paula Fielder  
John Finger & Judy Gaston  
Craig & Nancy Fischer  
Homer & Pat Fisher  
Todd E. Fisher  
Jeff Fletcher

David & Barbara Folsom  
Judi & David Forkner  
Marilyn L. Frank  
Jenny Freeman & Bill Allen  
James & Barbara Froula  
Gideon W. Fryer  
Shella Ann Fuhrman  
Sam Furrow  
Joel & Sandra Garber  
Arthur & Nancy Garrett  
Dr. Arlene Garrison  
Maurice W. Gerard  
Robert E. Gibson  
James E. Giles  
Jennifer J. Gill  
James E. Goble  
Grayce E. Goertz  
Keith Goff  
Warren L. Gooch  
Bruce & Susan Goodwin  
Dr. James Gorney & Dr. Beverly Gibbons  
Barry & Karen Goss  
John W. Gowan, Jr.  
Gary & Carol Grametbauer  
Dana & Nancy Griffin  
Billy & Sandra Grimm  
Brian & Angela Groenhout  
Doug & Sally Gross  
Melvyn & Edith Halbert  
Bill & Kathy Hall  
Marvin L. Hammond  
Nancy E. Hardin  
Gary Harmon  
Gail P. Harris  
Gene & Becky Hartman  
Jim & Natalie Haslam  
Richard & Margaret Haupt  
Howard & Carol Hay  
Lane S. Hays  
Christine G. Hayworth  
Julie Hembree  
Richard & Lucy Henighan  
Phyllis Henry  
Winifred A. Hepler  
John & Ann Hill  
Robert M. Hill  
Richard & Jeanie Hilten

Norman E. Hinkle  
Audrey Hoff  
Angela Hoffman & Seth  
McConchie  
Eddie & Carol Holden  
P.H. & Bonnie Holmes  
Audrine Honey  
Doug & Teresa Horn  
J.T. & Susan Howell  
John Howantiz  
Dan Hoxworth  
Mary Ruth Hoyt  
Dr. Charles & Sandra Huddleston  
Rocio Huet  
Lee Huffaker & Family  
Judith Dossett Hughes  
Mrs. Charles H. Hultquist  
Dr. Robert W. Hutson  
Mary & Wayne Hyatt  
Berny Ilgner  
June Inman  
William & Patricia Irby  
Homer & Betty Isbell  
Evelyn Isbill  
Mary E. 'Lib' Jackson  
Robert & Barbara James  
Wesley & Norma James  
Dr. Craig & Debbie Jarvis  
Mark & Mary Jendrek  
Chris Johnson  
Jane S. Johnson  
Joseph & Laura Johnston  
Wilma H. Jordan  
John & Sammie Judd  
Joel & Nancy Justin  
Dale & Mary Kangas  
Lewis & Marilyn Kearney  
Ellen C. Keith  
Matthew Kelleher, Jr. & Patricia  
Abbarno  
David & Alta Lovanne Kemp  
Jim & Janice Kern  
Don & Sandy Kilgore  
Charlene V. Kirby  
Charles Klabunde  
Darrel Kohlhorst  
Frank & Janet Kornegay  
Manfred O. Krause  
Stephen & Carol Krauss  
Lynn & Joe Kszos  
Harold & Jean Lambert  
Bill Landry

George H. Lane  
Michael & Carlene LeCompte  
Charles & Annette Levin  
David & Christie Lewis  
Magdalene P. Liles  
David & Susan Long  
Bob & Maureen Lucas  
William J. Lukosavich  
Clifford & Patsy Lynch  
Robert & Jan Marker  
Fred & Diane Martin  
Paul W. Martin, Jr.  
Archie & Harriet Mathews  
Lenny & Wilma Mattingly  
Donald E. Maurer  
Allen & Alice McCallie  
Kevin & Tonya McCollum  
Jane S. McCullough  
Gladys & Chris McDonnell  
Janet McKinley  
Robert McKinnon  
Jenny E. Mercer & Robert Sweetser  
John & Marilyn Merkle  
Keith & Janie Mertz  
James & Nadine Messler  
Charles E. Metcalfe, II  
Bonnie Millard  
Paul Warrick Miller  
Jay & Jennifer Mills  
Jack Milne  
Billy & Karen Minser  
Phillip W. Moffitt  
Mary Jane Moore  
Clarence & Charlotte Morrison  
Mark & Leslie Morrison  
Mary P. Muir  
William W. Murphy  
LeAnn Mynatt  
James B. Nance  
Dr. Henry & Kathryn Nelson  
Nancy Neumann  
Kathy & Bob L. Newman  
Donald & Barbara Newton  
John H. Noel  
Frank & Bonnie Oakberg  
Lester & Kathleen Oakes  
John & Betsy O'Connor  
Harry & Amy Ogden  
Veronica O'Hearn  
Brien & Dee Ann Ostby  
Alan M. Parker  
E.L. Parker, III

Fred Pasteur  
Robert & Sylvia Lynn Peery  
John & Marie Peine  
Sarah W. Penegar, Ph.D.  
Nick Petrone  
Anne C. Phillips  
James E. Phillips  
Dennis E. Poland  
John C. Polos  
Randall & Kathleen Pope  
Judith A. Poulson  
Dr. Laura Powers & Dr. John  
Burkhart  
Robert & Janet Prince  
Larry & Carolyn Proctor  
Dr. Robert D. Proffitt  
Chris & Debra Ralls  
Rep. Bob Ramsey  
Richard Raridon  
Ann B. Ray  
John & Nancy Ray  
Thomas & Pamela Reddoch  
Robert D. Reily  
David & Willa Reister  
Ann B. Rhea  
Jim Richards  
John & Marjorie Richardson  
Nancy Roberts  
Bill & Shelly Robinson  
Marilyn J. Rogers  
Sam & Maragaret Rogers  
Jack & Sara Rose  
Ken & Patra Rule  
Sarah J. Rule  
Leo Sain  
Milton J. Sams  
Michael & Michele Sanders  
Dr. William H. Savell, Jr.  
Royce & Anne Sayer  
Nancy Ann Schimmick  
Dr. Gary & Joretta Schneider  
Dr. William & Rebecca Schneider  
Ken & Wendy Schneider  
Bill Scroggins  
Lynn & Willie Seeber  
Benjamin Sessions  
John & Rebecca Sewell  
Kate Shattuck  
David & Judy Shiflett  
Mark Shipley  
Ronald & Shelly Shropshire  
David & Teresa Shupp

Kristi F. Simpson  
William & Muriel Sirett  
Jack & Joanne Sites  
Joan M. Sitton  
Will H. Skelton  
Marvin & Wilda Smith  
Luis & Kim Soltero  
Cindy Spangler  
Jean H. Springer  
Edward & Darlene St. Clair  
Bryan & Norma Stache  
Billy & Carmella Stair  
Steve & Marsha Standridge  
Robert & Barbara Stone  
Judith M. Stribling  
Ben & Bonny Kate Sugg  
Bill & Mary Kay Sullivan  
Mike & Mary Suttles  
Joe & Becky Swann  
Marjorie L. Swenson  
Paul & Barbara Taylor  
Sharon Templeton  
Gary & Lois Thacker  
Gordon & Nancy Thomas  
John Z. C. Thomas  
Dan H. Thompson  
Jo Ann Thompson  
John Thompson  
John & Joan Thompson  
Jim Tipton  
Peggy E. Tollison  
Randy & Louise Trudell  
Max & Kathy Trundle  
Frank & Judy Turner  
Peggy A. Turner  
Robert & Nancy Van Hook  
Aase & Fred Vaslow  
Sam & Mary Ann Venable  
William D. Vines III  
Craig H. Voris  
William & Marjorie Waldrop  
Gary & Linda Walker  
Roberta W. Walker & Jan Gardner  
James & Elizabeth Wall  
Mildred K. Wallace  
Walter & Lynne Fain  
Jim & Candy Wansley  
George & Virginia Warlick  
Melissa Wauford  
12 Glen D. Weber

Stephen & Carol Weber  
Martha Weeks  
Sarah J. Weeks  
Nancy C. Wellford  
George Addison West  
Steve & Ruth West  
Terry M. Whitt  
Jacqueline Whittemore  
John & Kathy Wilbanks  
Clifton F. Willis  
Paul & Deb Willson  
Amos & Etta Wilson  
George E. Wilson III  
Stuart Worden  
Ralph J. Wynn  
Edwin S. Yeiser  
Edwin & Ursula Young  
Rebekah Estes Young & David Young  
Dr. Mary Sue Younger & James  
Schmidhammer

#### **'IN MEMORY OF' MEMORIALS**

Jeanne Turner Ansley  
John B. Breining  
Randy Brown  
Carlos C. Campbell  
Nancy M. Cann  
Ann Ruth Martin Clark  
David Cox  
Mike Crawley  
Hellonise Powell Dodson  
Beth Dupree  
Carl & Noma Eustace  
Jay Garrison  
Dr. William F. Hutson  
Martin Inman  
James E. Johnson  
Clyde Jones  
Joyce McCroskey  
Jo Metcalfe  
Carey M. Moore  
Jane C. Moore  
Matthew Morgan  
Otis L. Ostby  
Kay Parvin  
Kenneth Rowe  
Eddie Rubright  
Aaron J. Sharp  
Betty Bedwell Siewert  
Maxwell E. Springer

Felder Weeks  
Ray Williamson  
Dr. John Scott Wilson

#### **'IN HONOR OF' TRIBUTES**

Evan, Graham & Hugh Boswell  
Dana & Nancy Griffin  
Christine Hayworth  
Bob Van Hook  
Allen Householder  
Marian Kasten  
Bill Landry  
Leslie & Peyton Lehpo  
Billy Minser  
Mike & Rosemary Petrone  
Lila Sue Saalwachter  
Dean Stone  
Frank Stribling  
Valley Dream Farm  
Amos & Etta Wilson

#### **GRANTS & FOUNDATION SUPPORT**

Christine G. Hayworth  
Cobble Family Foundation Inc.  
Cornerstone Foundation of Knoxville  
First Tennessee Foundation  
Gail P. Harris  
Knoxville Garden Club  
Land Trust Alliance - SE Reg. Office

#### **ORGANIZATIONAL PARTNERS**

Alliance for the Cumberlands • Land  
Trust Alliance - SE Reg. Office • Little  
River Watershed Association • TN  
Farmland Legacy Partnership • TWRA

#### **COMMUNITY SUPPORTERS**

Alcoa TN FCU • Arcadis • Barnes &  
Noble • Stephen Lyn Bales • Blount Co.  
Soil Conservation District • Blount Me-  
morial Wellness Ctr • Campbell Tent &  
Party Rentals • CBBC • EcoFlow Con-  
sulting • Foothills Wine & Spirits • High  
Resolutions • Holly's Eventful Catering •  
Jon's Golf Carts • Little River Trading Co.  
• Mapping Svcs. (Ray Boswell & Kim Raia)  
• McGuire's Graphic Services • Monroe  
Co. Farm Bureau (Farm Bureau Women) •  
Monroe Co. Soil Conservation District •  
The Pour Guys • Rainwater Farm • River  
Sports • S&ME • Smoky Mtn. Planned  
Giving Council • Stanley's Greenhouses  
• Stellar Visions & Sounds • 3 Rivers  
Angler • TN Chapter of Meeting Plan-  
ners Intl. (Melanie Clifford - Dancing Bear  
Lodge) • UT Press • Vienna Coffeehouse •  
The Woodpickers



*I did not think Foothills would be interested in the bequest of my house, that they were only interested in large parcels. It was good to know that FLC appreciates any and all land/monetary donations. If you have something you would like to will to an organization, whose mission you identify with, then I would encourage you to do it. I was interested in doing my part to save land - preserving it is so important. You gotta have land!*

*Legacy Circle Member, Nancy Ann Schimmick*

## Legacy Circle - Benefitting Future Generations

East Tennessee's rural character is rich in history, biological diversity, and majestic beauty. Scenic views, working farms, natural areas, and wildlife habitat just scratch the surface of why our region is worth preserving. Planned gifts provide FLC with a permanent foundation for conservation projects including land acquisition and stewardship programs and a landowner financial assistance fund.

These donations can be designated as restricted or unrestricted.

**For those whose passion lies in passing on their love of the land to future generations, we hope you will consider supporting FLC through these options:**

Naming FLC as a beneficiary in a will, trust, insurance policy, or retirement plan

Providing appreciated assets, securities, or land parcels

Donating land to Foothills for the purpose of retaining its agricultural and/or natural features

*FLC can work with your financial advisor to facilitate these and other giving methods.*

### **Legacy Circle Benefits Include:**

Inclusion on our Legacy Circle Members Plaque

Recognition as a Legacy Circle member at FLC's 2013 Celebration and in our 2013 Annual Report

Legacy Dinner— Small dinner and visit with FLC Board & staff

*Additional benefits are available and can be customized*

*If you have left Foothills Land Conservancy in your will, please let us know so that we may thank you during your lifetime. To join the Legacy Circle or to reach us with any questions, please call the FLC office at 865-681-8326.*

### **East Tennessee Land Conservation Programs**

If you own property and are considering preserving it in perpetuity, Foothills can walk you through the process. Preservation methods include:

**Conservation Easement** - This is a legal contract between a landowner and FLC describing the activities that may take place on a property in order to protect the land's conservation value. Landowners continue to own, use, and live on the land. They can bequeath it to family, public, or private entities.

**Fee Simple Ownership** - Landowner grants all property rights, title, and interest to Foothills. FLC then owns and manages the land.

**Remainder Interest/Reserved Life Estate** - Landowner conveys the land to FLC but continues to live or use the property until his/her death. The 'remainder interest' in the property then passes to Foothills Land Conservancy.

**Devise** - Land is conveyed to FLC at the death of a landowner through the landowner's will.



Images courtesy of Mark Lewis

## 2013 FLC Calendar of Events

\*Some events will be subject to a limited number of participants and/or registration fees.

- March 30th** Public & Private Lands –Providing Habitat Buffers for Our Smokies (FLC & Smoky Mtn. Field School)
- May 15th** Cheers for Charity at 3 Rivers Angler
- May 18th** Tour & Volunteer Project at Kyker Bottoms Wildlife Refuge (Blount County)
- June 1st** Land Trust Day at Mast General Store
- June 8th** Lunch with FLC Board & Staff - Mid Year Update (Bluff Mountain - Sevier Co.)
- August 6th** Pint Night at RiverSports
- August 17th** FLC's Summer Celebration
- September 28th** Public & Private Lands - Providing Habitat Buffers for Our Smokies (FLC & Smoky Mtn. Field School)
- October 12th** FLC Exhibit at the Centennial Conservation Expo (Knoxville)
- November 16th** FLC Dinner at Bluff Mountain

For more information about these events, please visit [www.foothillsland.org](http://www.foothillsland.org) to sign up for our eNews bulletin or contact the FLC office at 865-681-8326.

## *Becoming a Friend of the Foothills!*

### **Annual Memberships • Major Gifts • Leaving a Legacy**

With the help of our generous and ongoing supporters, 2012 was another successful year both in land conservation and Friend-raising. Foothills gladly accepts any and all donations - no gift is too small. Our annual membership program, called 'Friends of the Foothills', has expanded to include benefit levels that better recognize and strengthen the significant contributions of our donors. Individuals and businesses giving annually at \$1000+ are included in our newly formed Conservation Circle and those that wish to include FLC in their bequests, estate gifts, and land donations are part of our Legacy Circle (see page 13).

Foothills Land Conservancy is a 501(c)(3) non-profit and does not receive any financial support from federal, state, or local governments. We rely on individual and corporate contributions to sustain our organization, land acquisition, and stewardship programs.

To become an annual, quarterly, or monthly member, please utilize the donation envelope inserted into this newsletter. You can also indicate if your employer provides a gift matching program, and you plan to include FLC! For federal employees, please note that Foothills is also part of two regional Combined Federal Campaigns (#92935). If you would like more information about our membership programs and benefit levels, visit the 'Donate Now' button on our website at [www.foothillsland.org](http://www.foothillsland.org), call us at 865-681-8326 or send an email to [info@foothillsland.org](mailto:info@foothillsland.org).



Image courtesy of Mark Lewis

# Join us for FLC's 2013 Summer Celebration!

Saturday • August 17th, 2013 • 5:00PM



Photo courtesy of Mark Lewis

**PENROSE FARM**  
  
 8432 Nubbin Ridge Rd. • Knoxville, TN 37923



Photo courtesy of Mark Lewis



Photo courtesy of Jack Rose



Photo courtesy of Mark Lewis

## A special thank you to FLC's 2012 Celebration Sponsors & Host Committee!

### 2012 Sponsors

#### GOLD

Pilot Corporation\*

#### SILVER

B&W Y-12, LLC\* • Bechtel National Inc.\* • CH2M HILL\*  
 Energy Solutions\* • Fluor • Pro2Serve, Inc.\* • UCOR\*

#### BRONZE

Baker Donelson, PC*	Mast General Store*
Chervenak & Associates, PC*	ORNL Federal Credit Union*
Duo Fast*	Penrose Farm*
Fletcher Realty*	Property Service Group SE*
Furrow Auction Company*	Resource Advisory Services*
Highland Reserve*	SAIC*
Information Intl. Associates (IIa)*	The Trust Company*
Kramer Rayson, LLP*	UT Battelle*
Long Ragsdale & Waters, PC*	WSI Oake Ridge*
Mark Jendrek, PC*	

\*Indicates a returning sponsor!

### Thank you to our Celebration Volunteers:

Phyllis Henry • Amy Jendrek • Janet McKnight • Cindy Spangler •  
 Rebekah & David Young • Courtney Washburn

### 2012 Hosts

Honey & Lamar Alexander	Gail P. Harris
Kathy & Dr. Paul Ambrose	Christine G. Hayworth
Sheila & Dr. Charles Barnett	Robert M. Hill, Jr.
Joy M. Bishop	Susan & J.T. Howell
Pat & Ernie Blankenship	Betty & Homer Isbell
Nan Bobbett	Mary E. 'Lib' Jackson
B.J. & Gerald Boyd	Debbie & Dr. Craig Jarvis
Joyce & Robert J. Brown III	Marilyn & Lewis Kearney
Priscilla & Jim Campbell	Janet & Frank Kornegay
Bart Carey	Jean & Harold Lambert
Vicki & Jeff Chapman	Bill Landry
Terry A. Chervenak	Diane & Fred Martin
Betsy Child & Paul Barber	Paul W. Martin, Jr.
Ben C. Clark, Jr.	Tonya & Kevin McCollum
Stacy & Jay Clark	Karen & Billy Minser
Linda & Pete Claussen	LeAnn Mynatt
Donna & Bill Cobble	Janet & Robert Prince
Juanita & Terry Cowles	Dr. Robert D. Proffitt
Dr. Mary F. Cushman	Rep. Bob Ramsey
Paula & David Fielder	Darlene & Edward St. Clair
Judi & David Forkner	Lynn & Willie Seeber
Pat & Homer Fisher	Mary Kay & Bill Sullivan
Jenny Freeman & Bill Allen	Mary & Michael Suttles
Karen & Barry Goss	Nancy & Bob Van Hook
Marvin L. Hammond	Ruth & Steve West
	Kathy & John Wilbanks



373 Ellis Avenue  
Maryville, TN 37804

NON PROFIT  
U.S. POSTAGE PAID  
Maryville, TN  
Permit No. 9

Address Service Requested

*One of FLC's functions, which I think it's done quite well, is that of educating people about the importance of preserving some of our wild places and farmlands. FLC was originally set up to preserve farmlands around the GSMNP, and that's still important, but Foothills has expanded its scope to include more wild places and I think that's terribly important too.*

- Founding Foothills Member, Gail Harris



## Connect to Foothills!

[Foothillsland.org](http://Foothillsland.org)

(opt-in for eNews or view FLC's video)



**Facebook**

(‘Foothills Land Conservancy’)

**Twitter**

(EliseatFLC)

## Save the Date!

May 15th - Cheers for Charity  
Three Rivers Angler

June 1st- Land Trust Day  
Mast General Store

August 6th - Pint Night  
River Sports Outfitters

August 17th - Summer Celebration  
Penrose Farm - Knoxville